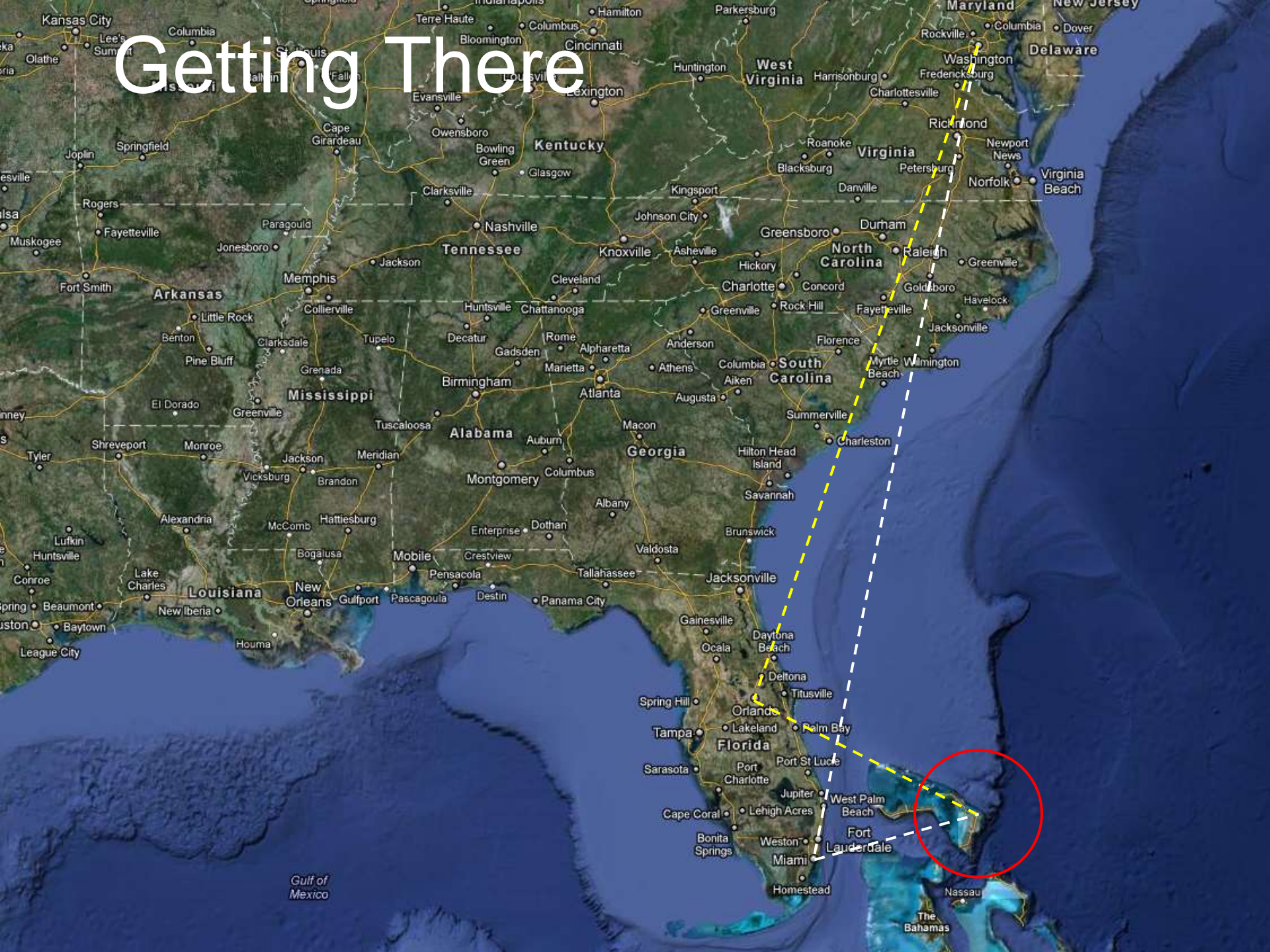


# Fly Fishing Abaco



Pete Adams

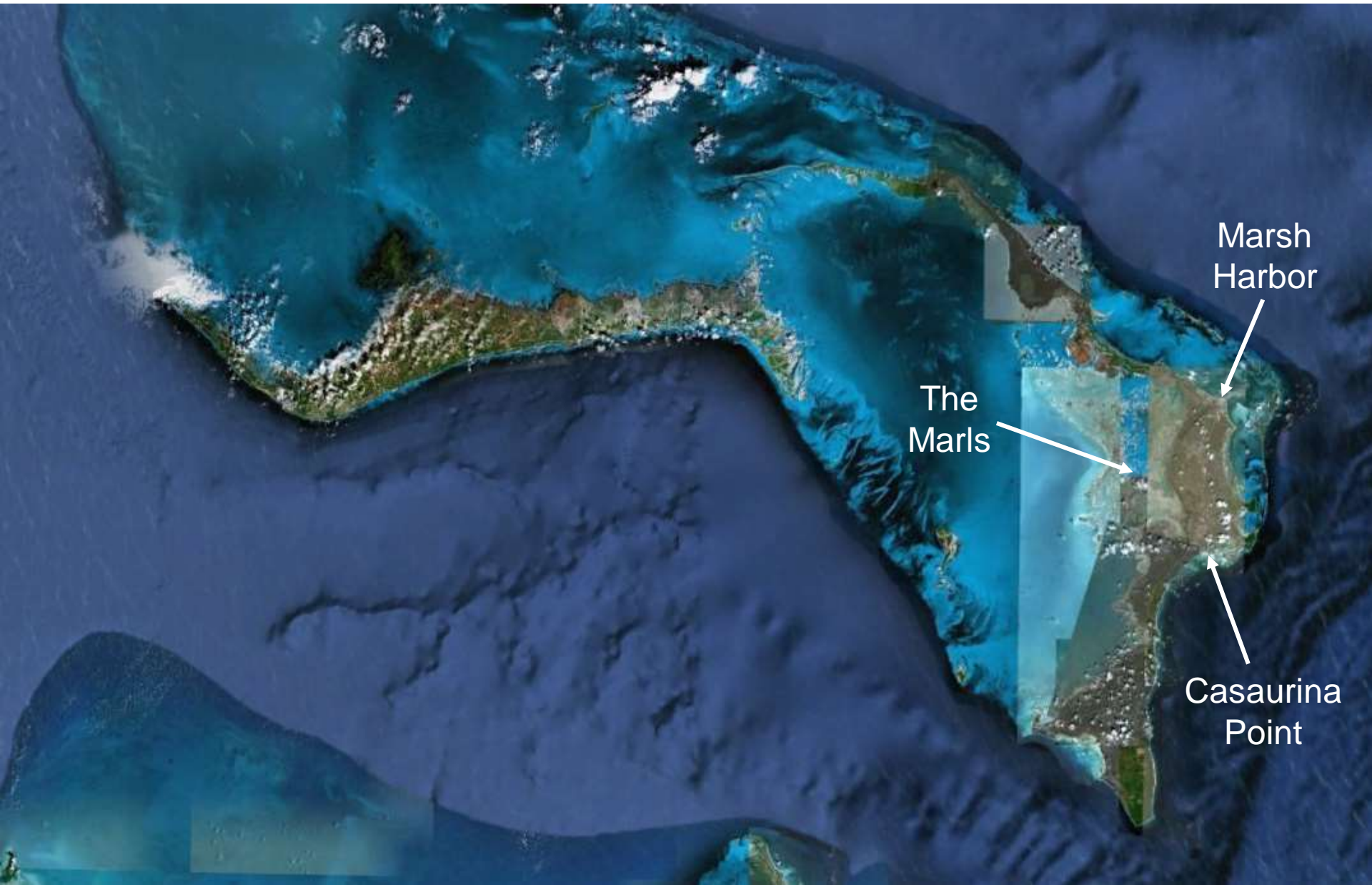
# Getting There



# The Plane - Miami to Abaco



# The Abaco Islands

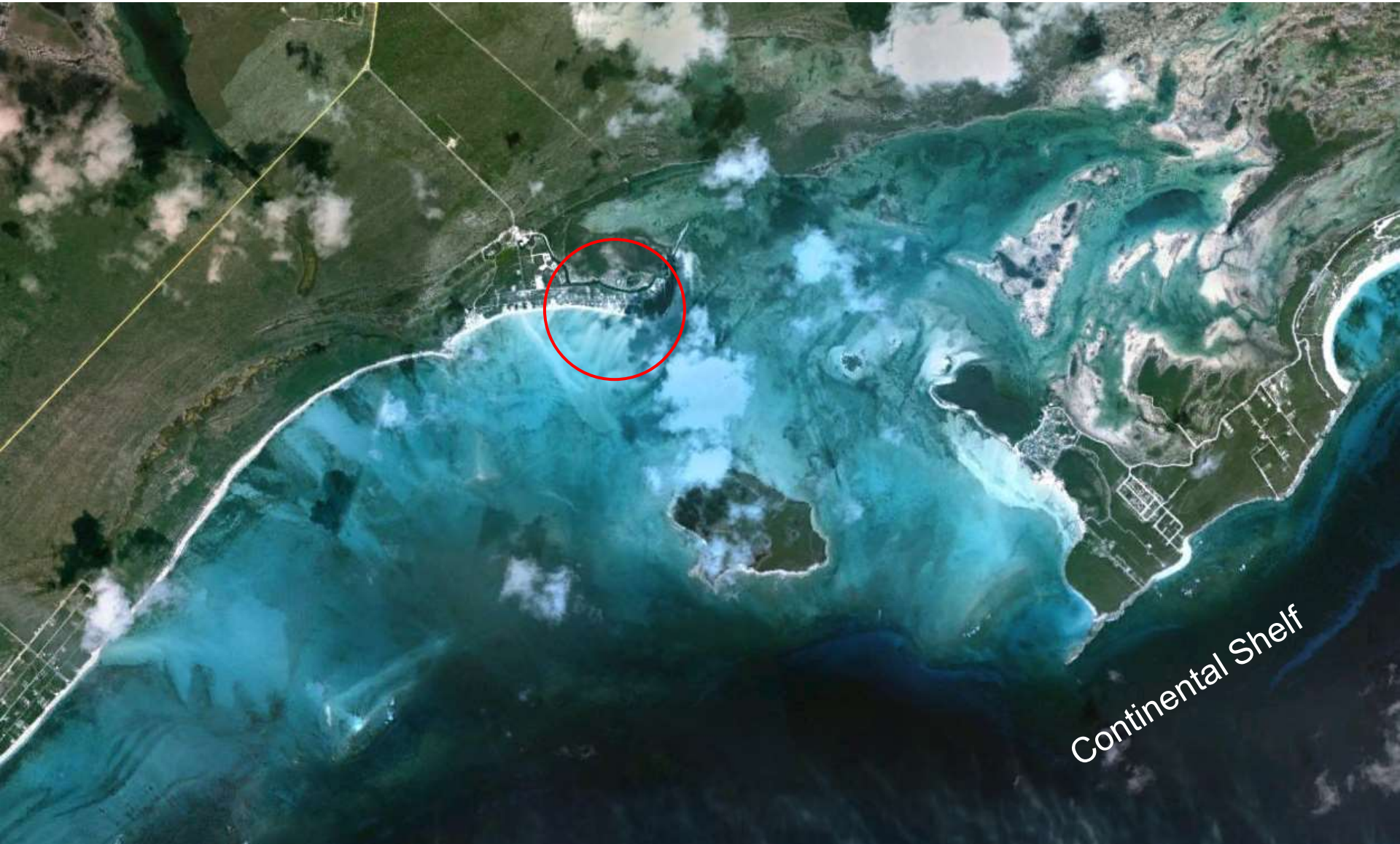


Marsh  
Harbor

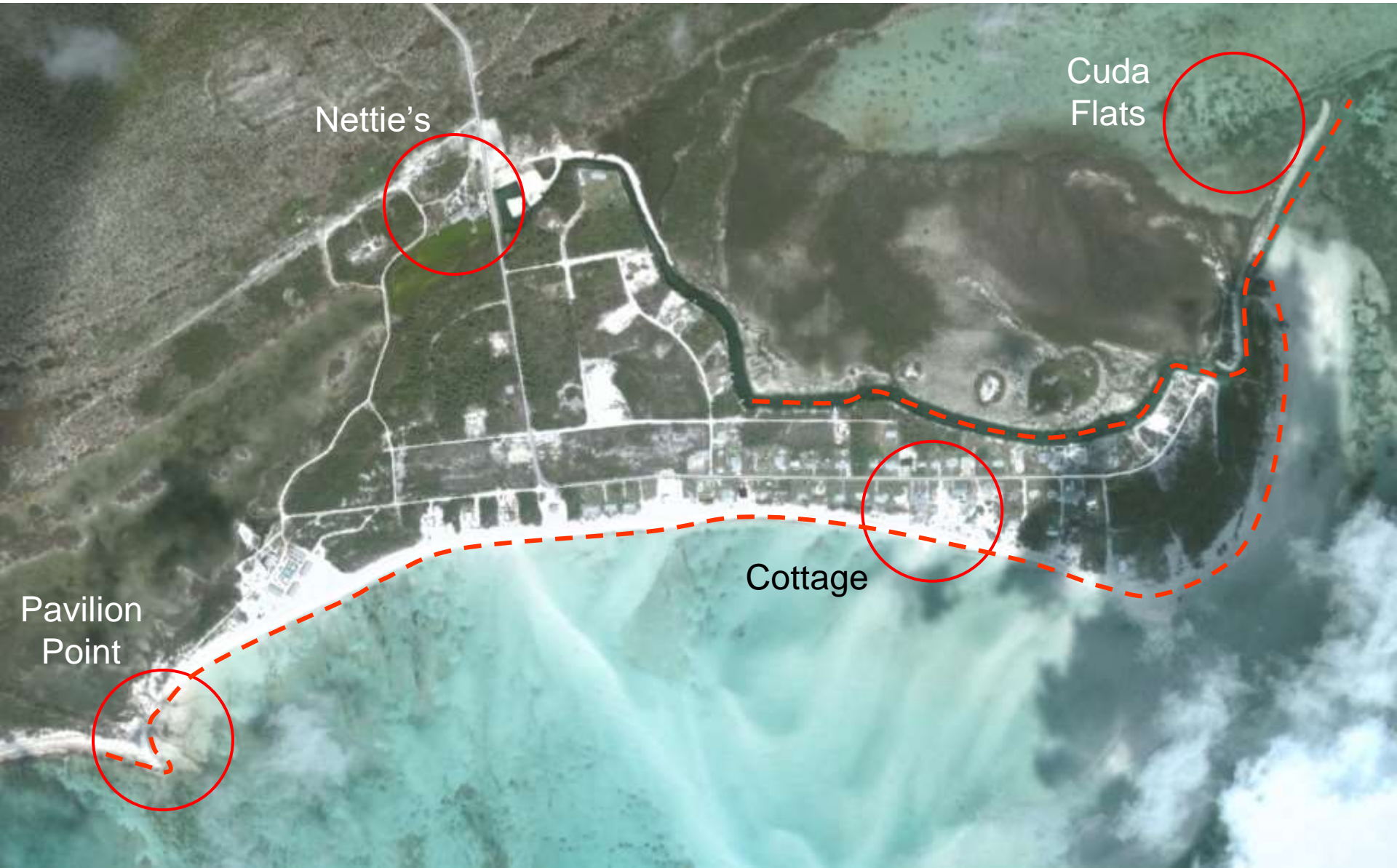
The  
Marls

Casaurina  
Point

# Casaurina Point



# Casaurina Point



# The Wall at Nettie's



# The Cottage





# A View From the Cottage



# A View From Next Door



# Cottage Flats at Low Tide



# The Marls



# Road to the Marls



# Launching Near the Marls



# The Marls Flats



# Mangroves in the Marls





# Mangroves at Low Tide



# Poling on a Calm Day

## Note:

- Hell's Bay flats boat - shallow running, clear deck
- Elevated platform for spotting fish
- Lightweight, neutral-colored clothing
- Lightweight, graphite pole with rubber tip - metal too loud on coral
- Crocs shoes - ventilated, salt-proof, floating, quiet



# Some of the Fish We Caught

- Bonefish
- Barracuda
- Blue Runner
- Horseeye Jack
- Mutton Snapper
- Mangrove Snapper
- Needlefish
- Mahi Mahi (Dolphin)
- Yellowfin Mohara
- Yellowfin Tuna
- Skipjack Tuna
- Blackfin Tuna
- Blacktip Shark
- Lemon Shark
- Stingray
- Flying Fish

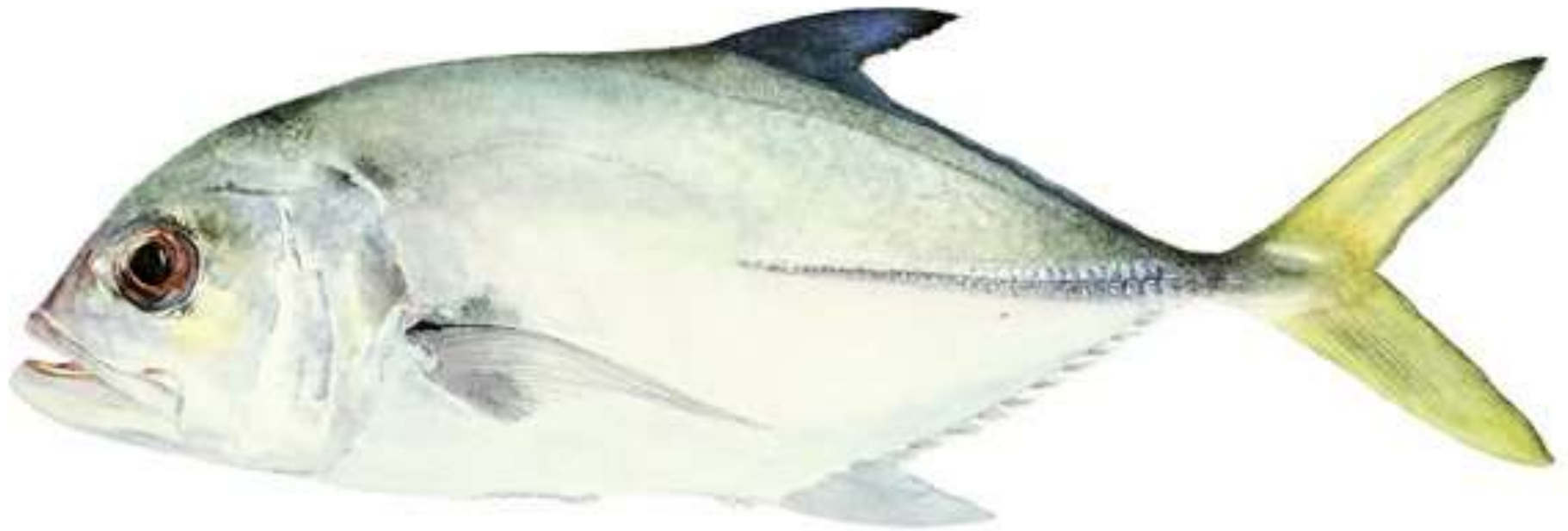
# Bonefish (25")



# Barracuda (26")



# Horseeye Jack



# Mutton Snapper



# Mangrove Snapper

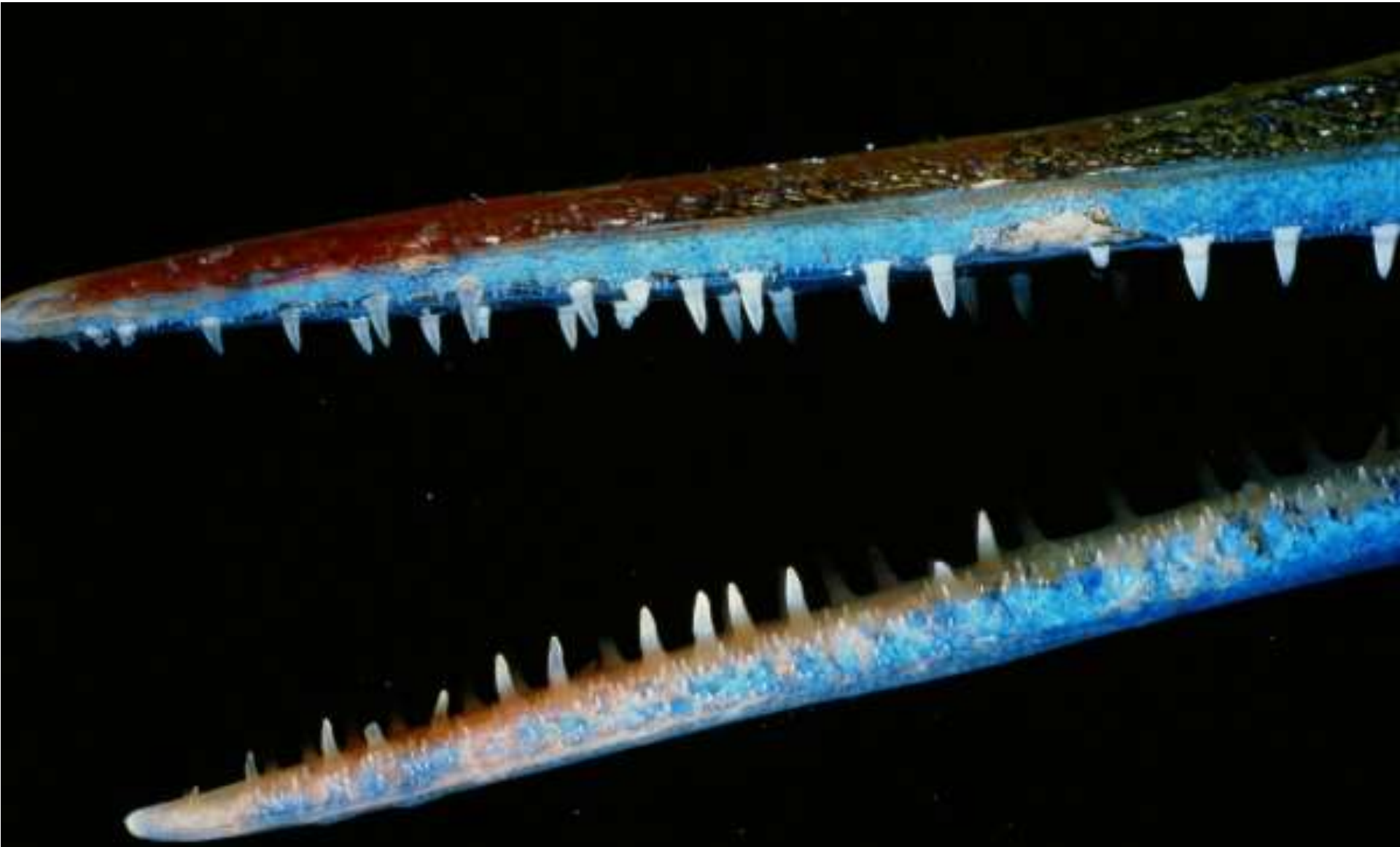




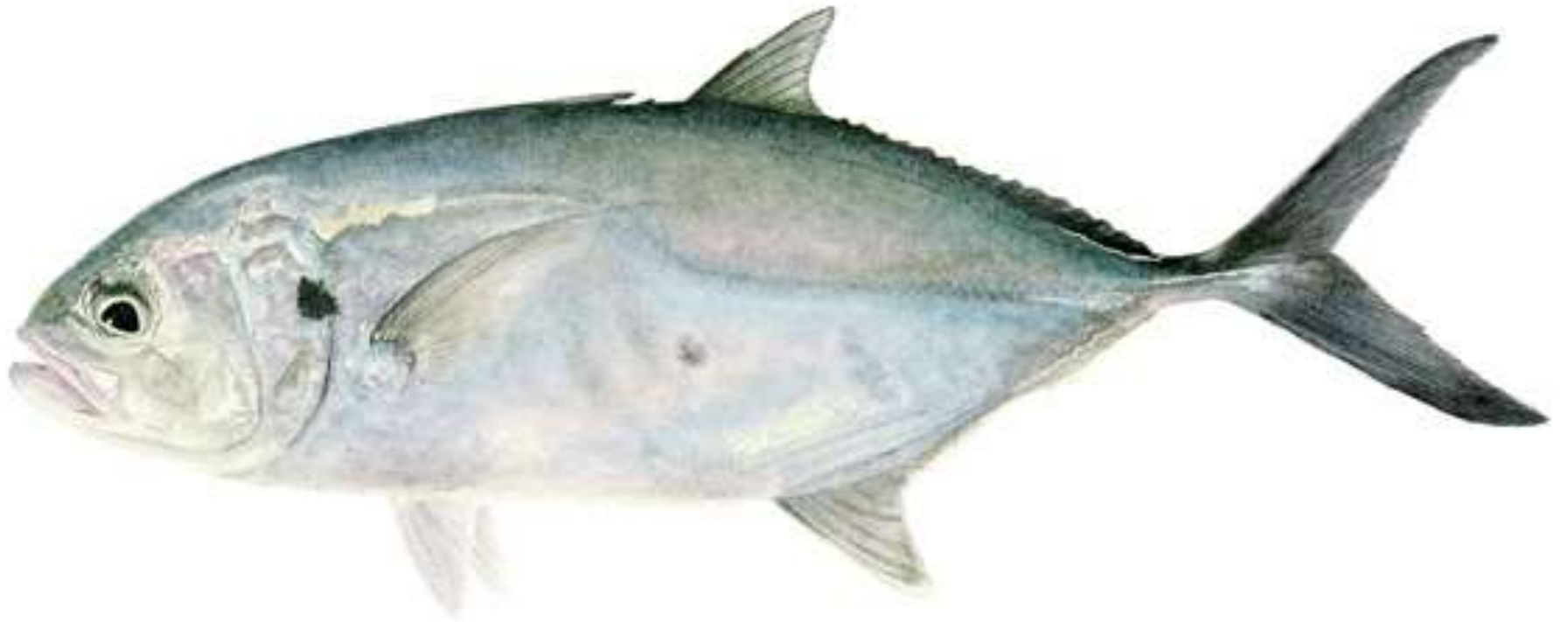
# Needlefish (27")



# Needlefish Teeth



# Blue Runner



# Yellowfin Mojarra



# Yellowfin Tuna (~30")



# Blacktip Shark (~4 ft)



# Stingray (~5 ft)



# Flying Fish





# Green Sea Turtle (~300 lb)



# Top 4 Flies

Crazy Charlie



Merkin Crab



Ragin Craven



EP Micro Crabs

# Why Tan Crab Patterns Work...



# Some Patterns Were Strange...



# Gear

- Rods:
  - Med-fast to fast action (wind)
  - 6-wt for small bones, etc. (light wind)
  - 8-wt for med-large bones, etc. (longer range, med wind)
  - 10-wt for permit, small shark, small tarpon, etc. (high wind)
  - Bring primary + one spare each day
- Reels:
  - Saltwater proof
  - Smooth, strong drag
  - Capacity for at least 200 yds backing + line
- Lines & Leaders:
  - Match rods or one size up
  - Mostly floating (shallow water)
  - Bright colored or textured lines scare fish!
  - 9-ft tapered fluorocarbon leaders with 12-lb tippet (bones not leader-shy, just presentation-shy)

# Gear

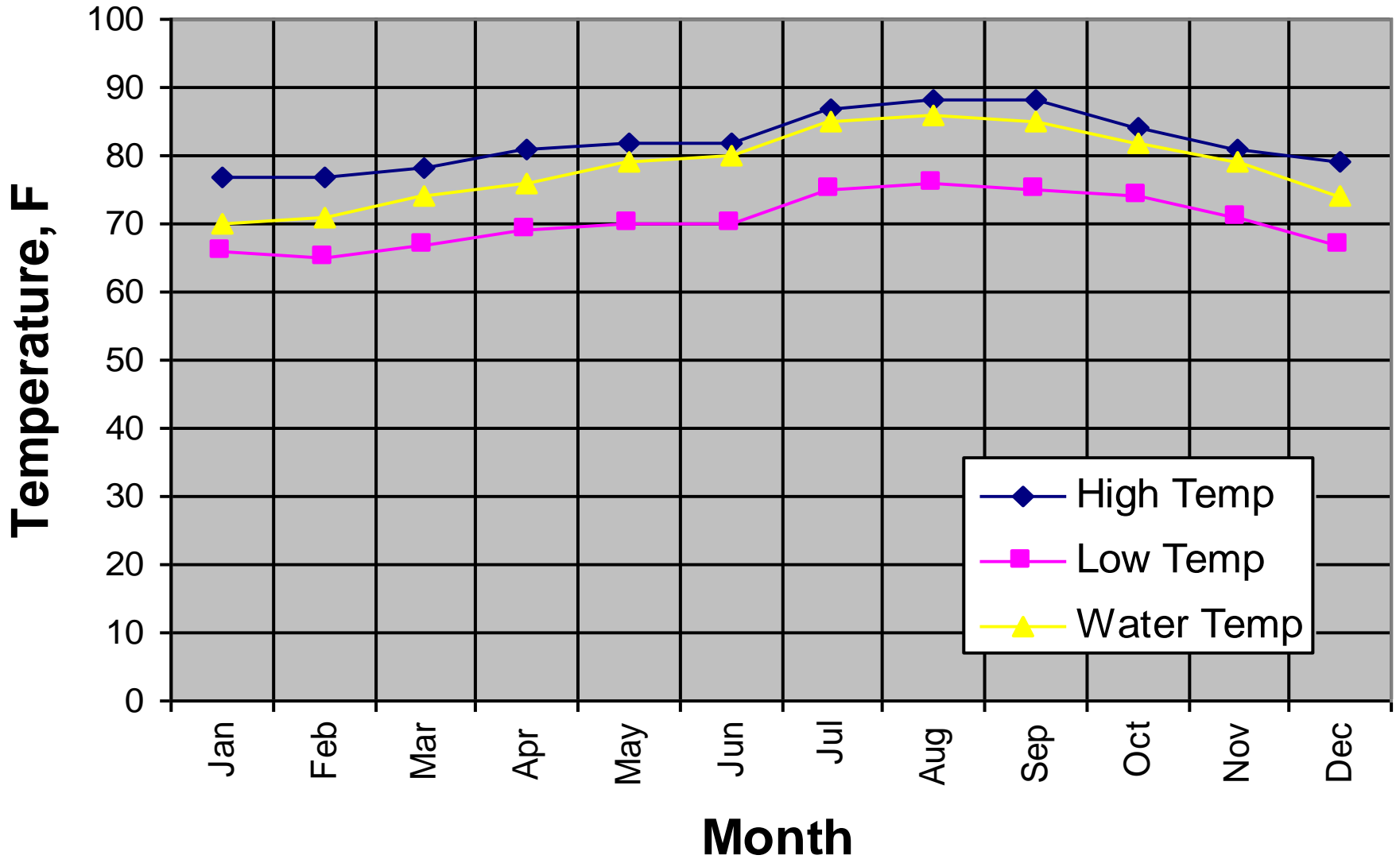
- Boat Bag:
  - Waterproof, easy to access
  - Carry spare reels/spools, lines, leaders, rain jacket, snacks, lunch, flies, sunglasses, sunblock, etc. (drinks provided)
- Clothing:
  - Flats boots for wading; bare feet for boating (lines)
  - Lightweight, quick-dry, sunblock clothing
  - Sun hat, sun gloves, buff
  - Sunglasses
- Other:
  - Hook sharpener
  - Nippers
  - Forceps / stainless pliers / hook remover

# Fishing Tips

- Be stealthy!
  - Most fish are very wary (many predators)
  - Water is very clear and shallow
  - Fish are hard to see until you are close
- Learn to cast!
  - Gentle presentation on calm days; lead the fish
  - High speed & tight loops on windy days; keep the line low (fast action rod helps)
- Practice catch & release (esp. bones & permit)
  - Don't fight fish to exhaustion
  - Don't take fish out of the water
  - Don't handle fish
  - Use barbless hooks



# Typical Weather





# Places to Explore Next Time...



Questions?

